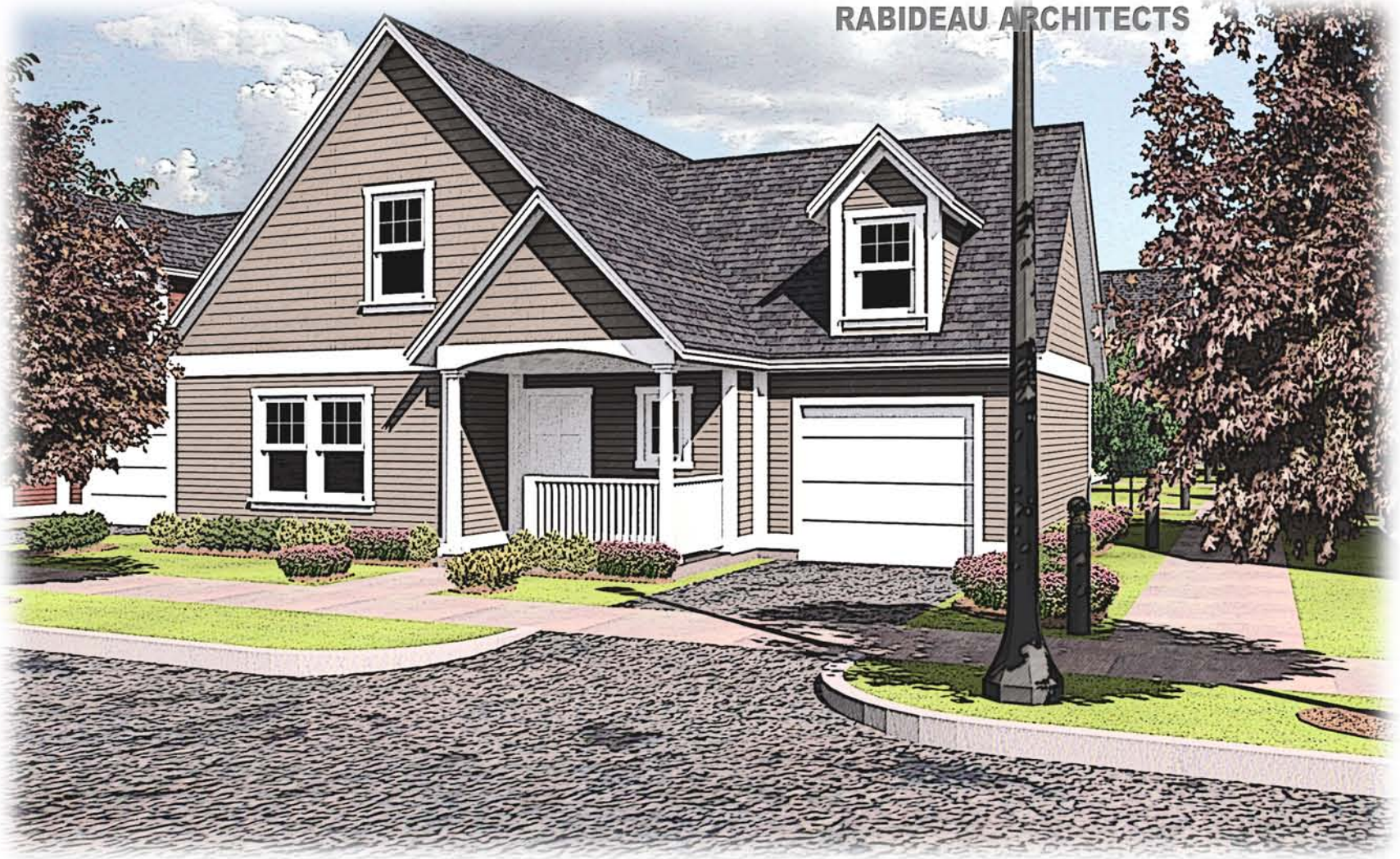


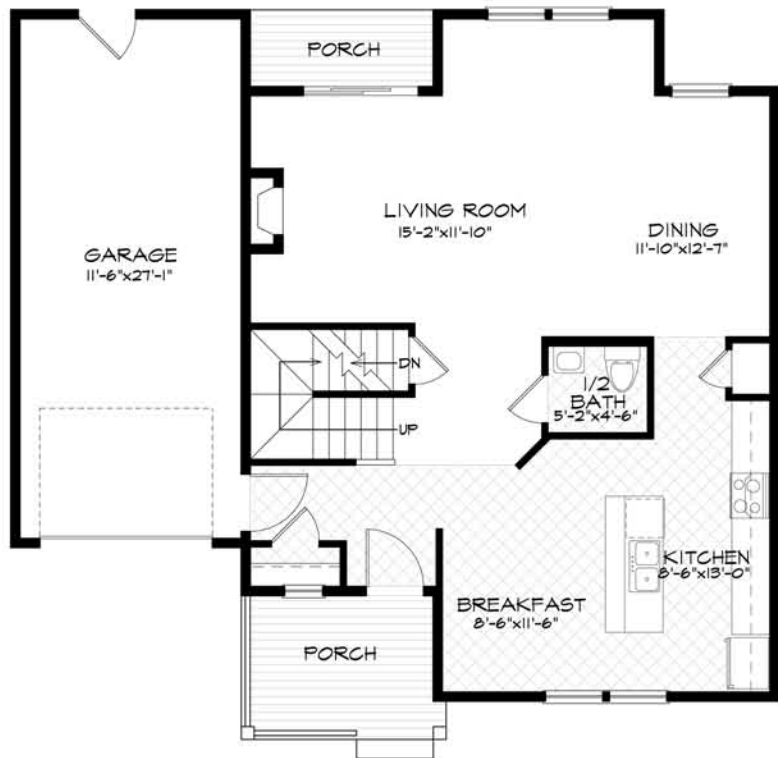
THE HAMLET MANSFIELD III HOUSE

RABIDEAU ARCHITECTS

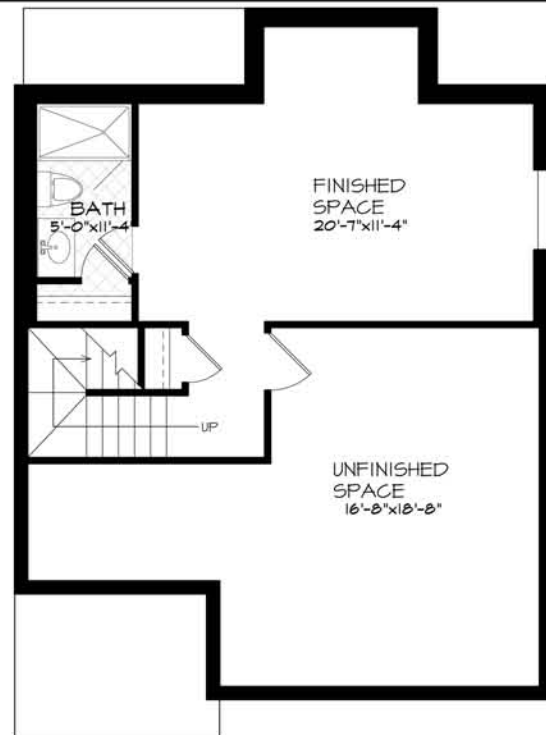


FRONT PERSPECTIVE

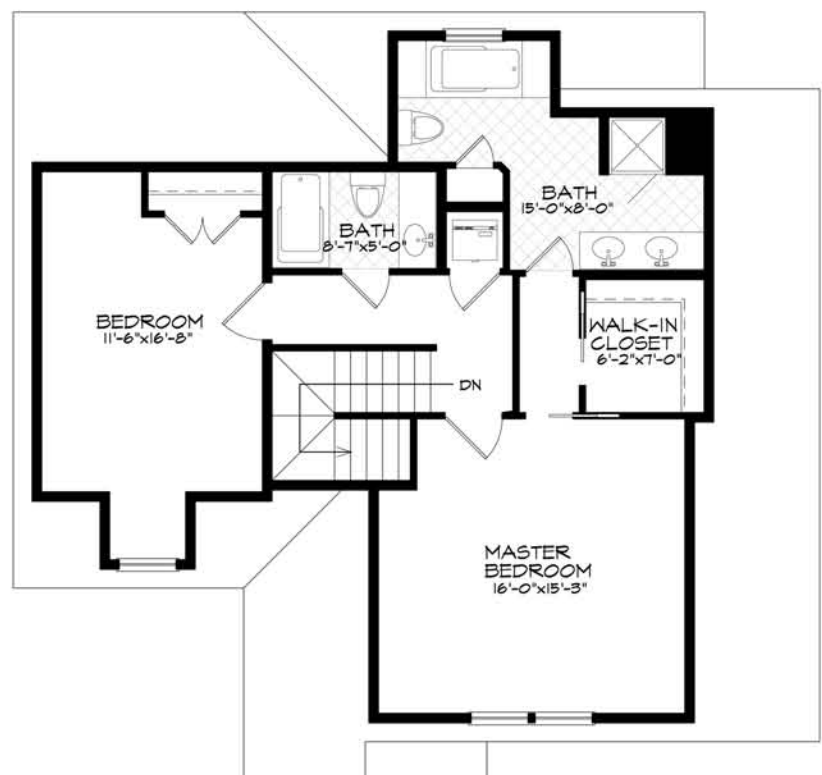
FIRST FLOOR	889 SQFT
SECOND FLOOR	914 SQFT
TOTAL	1,803 SQFT
GARAGE	338 SQFT
BASEMENT FINISHED	483 SQFT
BASEMENT UNFINISHED	398 SQFT



FIRST FLOOR PLAN



BASEMENT FLOOR PLAN



SECOND FLOOR PLAN



Village Associates, LLC reserves the right to make modifications to floor plans, materials, and specifications without notice. Dimensions are approximate. Illustrations are artist's rendering only. Oral representations cannot be relied upon as correctly stating representations of the developer.